

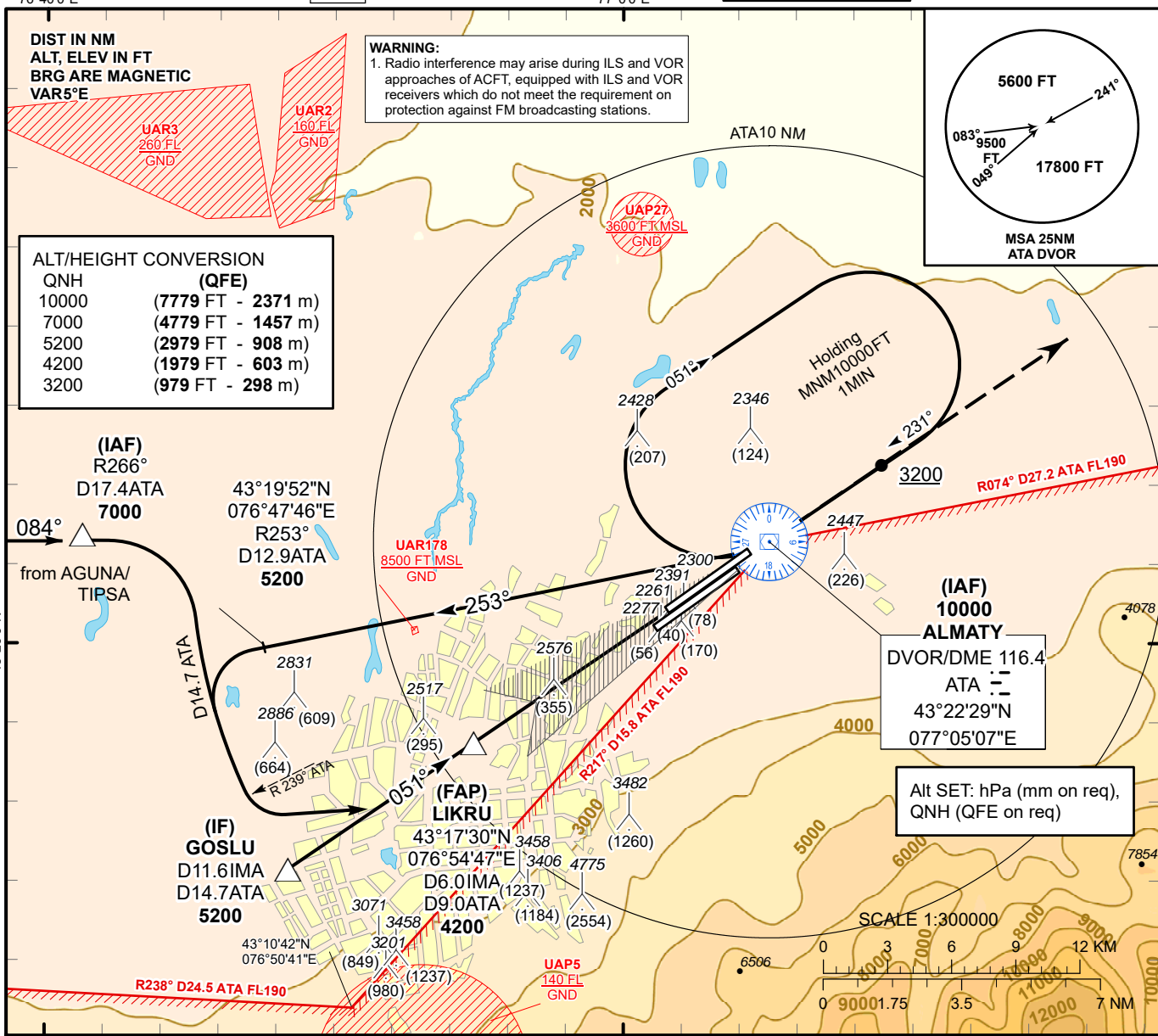
INSTRUMENT  
APPROACH  
CHART - ICAO

ILS  
LLZ 109.1  
IMA  
GP 331.4  
CH 28X

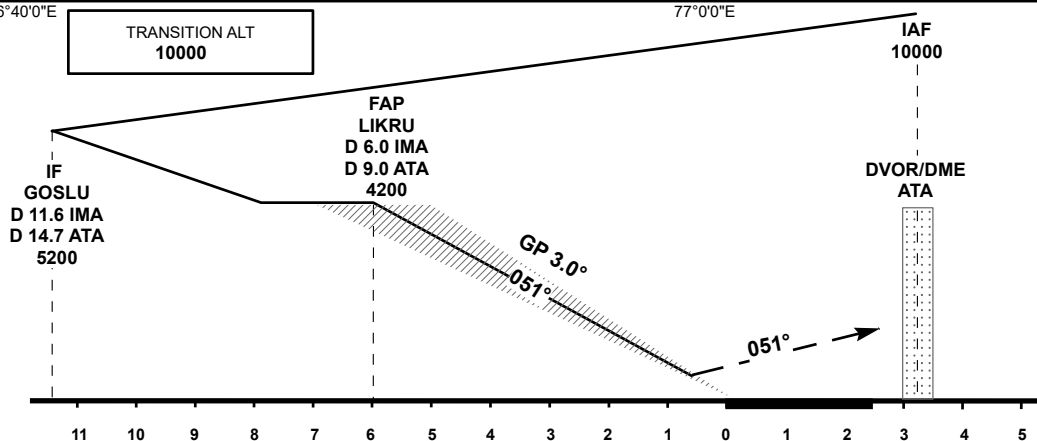
AERODROME ELEV **2238 FT**  
HEIGHTS RELATED TO  
THR RWY 05L - ELEV **2221 FT**

ALMATY APPROACH 118.3  
ALMATY RADAR 126.8  
ALMATY TOWER 119.4  
ALMATY ATIS (EN) 129.8  
ALMATY ATIS (RU) 135.1

ALMATY  
ILS/DME Z  
RWY 05L



TRANSITION ALT  
10000



MISSED APPROACH

Climb on track 051° to 5200.  
After passing 3200 radar vectoring will be provided.

RADIO FAILURE:

In case of RCF climb on track 051° to 5200 FT, turn LEFT to ATA, but not earlier than 6.5NM ATA. Climb to 10000FT (not below) to ATA and join to holding pattern.

CHANGE: APP FREQ.

Aircraft Category		A	B	C	D	DIST to THR DME IMA	NM	6.0	5	4	3	2	1
Straight-in Approach OCA/H						DME ATA	NM	9.0	8.0	7.0	6.0	5.0	4.0
	CAT I	2421(200)	2421(200)	2421(200)	2421(200)	ALTITUDE	FT	4200	3889	3562	3238	2915	2594
						HEIGHT	FT	1979	1668	1341	1017	694	373
DME IMA ZERO RANGED TO THR RWY 05L													
Aerodrome Operating Minima DH ft x RVR(CMV)	CAT I												
						GS	Kt	80	100	120	140	160	180
						Desc.Rate (5.2%)	ft/min	420	530	630	740	840	950

ALMATY  
ILS/DME Z

AERONAUTICAL DATA TABULATION

ILS approach to RWY05L from ATA DVOR/DME, GOSLU	
Fix/point	Coordinates
ATA DVOR/DME	43° 22' 29.4"N 077° 05' 07.0"E
IMA D6.0 ATA D9.0 (FAP LIKRU)	43° 17' 29.8"N 076° 54' 46.6"E
GOSLU (IF) IMA D11.6 ATA 14.7	43° 14' 13.1"N 076° 48' 29.8"E
R 266° D17.4 ATA (IAF)	43° 22' 43.6"N 076° 41' 15.3"E
THR RWY 05L	43° 20' 50.44"N 077° 01' 30.67"E
IMA LOC	43° 22' 23.6"N 077° 04' 38.8"E